



TREE PLANTING GUIDE

Planting the right tree in the right place adds beauty to the landscape, offers environmental benefits and saves energy

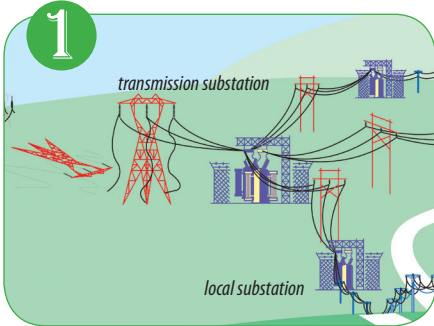
At Wiregrass Electric Cooperative, we are committed to maintaining a safe, reliable power distribution. Sometimes, however, trees get in the way of that goal. While we have a comprehensive plan for maintaining reliability and preventing outages, we ask for your help by considering the following tips when planting:

- ▶ **Always call 8-1-1** before digging to have underground utilities located.
- ▶ **Look up** before you plant a tree to see if it is near a power line.
- ▶ **Know how tall your new tree will be at maturity.** Make sure trees are planted at least that distance from power poles or lines. For example, if a tree will grow to reach 20' at maturity, it should be planted at least 20' from the pole or lines.
- ▶ **Keep limbs trimmed** and away from power lines. When trees or other objects are too close to a power line, an "arc flash" can form. This occurs when a short circuit travels through the air and flashes over from an energized conductor to trees — or any object, including people, that conduct electricity — forming an arc of electricity.
- ▶ **Block the morning and afternoon sun** in the summer by planting deciduous trees on the east and west sides of your house. This will reduce cooling costs.
- ▶ **Coniferous trees can be planted as a windbreak** on the north-northwest side of a house. This reduces heating costs resulting from evaporative cooling and air infiltration in the winter. They also guide wind up and over the house.

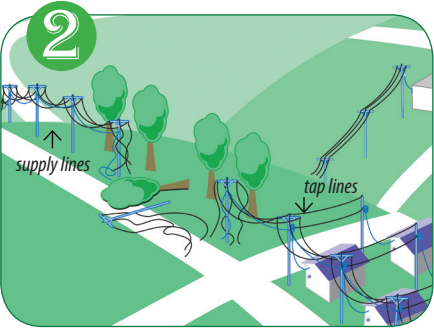
Find more helpful tips at www.wiregrass.coop

WHEN THE POWER GOES OUT...

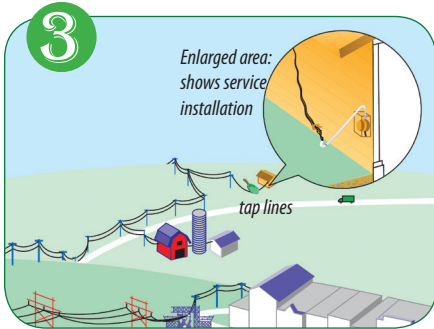
When severe weather strikes our area, WEC employees are on the job restoring power to members as quickly and safely as possible. WEC uses the following guidelines to determine what order power is restored:



PowerSouth (our wholesale power supplier) must first inspect substations for damages. The substations, which can provide power to thousands of people could be served by one high-voltage transmission line, so it gets attention first. Wiregrass Electric Cooperative checks local substations and repairs any damages.



Next, WEC supply lines are checked. These supply lines carry electricity away from the substation to a town or housing development. The final supply lines, or tap lines, carry power to utility poles or underground transformers. Line crews fix the remaining outages based on restoring service to the greatest number of members.



Sometimes, damage will occur on the service line between your house and the transformer on the nearby pole. WEC needs to know if you have an outage, so a service crew can repair it. NOTE: Members are responsible for damage to the service installation on your home or building. WEC cannot repair anything beyond this point. If damage has occurred here, please call a licensed electrician.

ALWAYS CALL BEFORE YOU DIG



Know what's below.
Call before you dig.

Common Ground Alliance



WIREGRASS
ELECTRIC COOPERATIVE
A PowerSouth Energy Cooperative
www.wiregrass.coop



WIREGRASS

ELECTRIC COOPERATIVE

A PowerSouth Energy Cooperative

www.wiregrass.coop

www.wiregrass.coop

1-800-239-4602

Toll Free OUTAGE HOTLINE:

1-888-4-MY-OUTAGE

OR 1-888-469-6882